

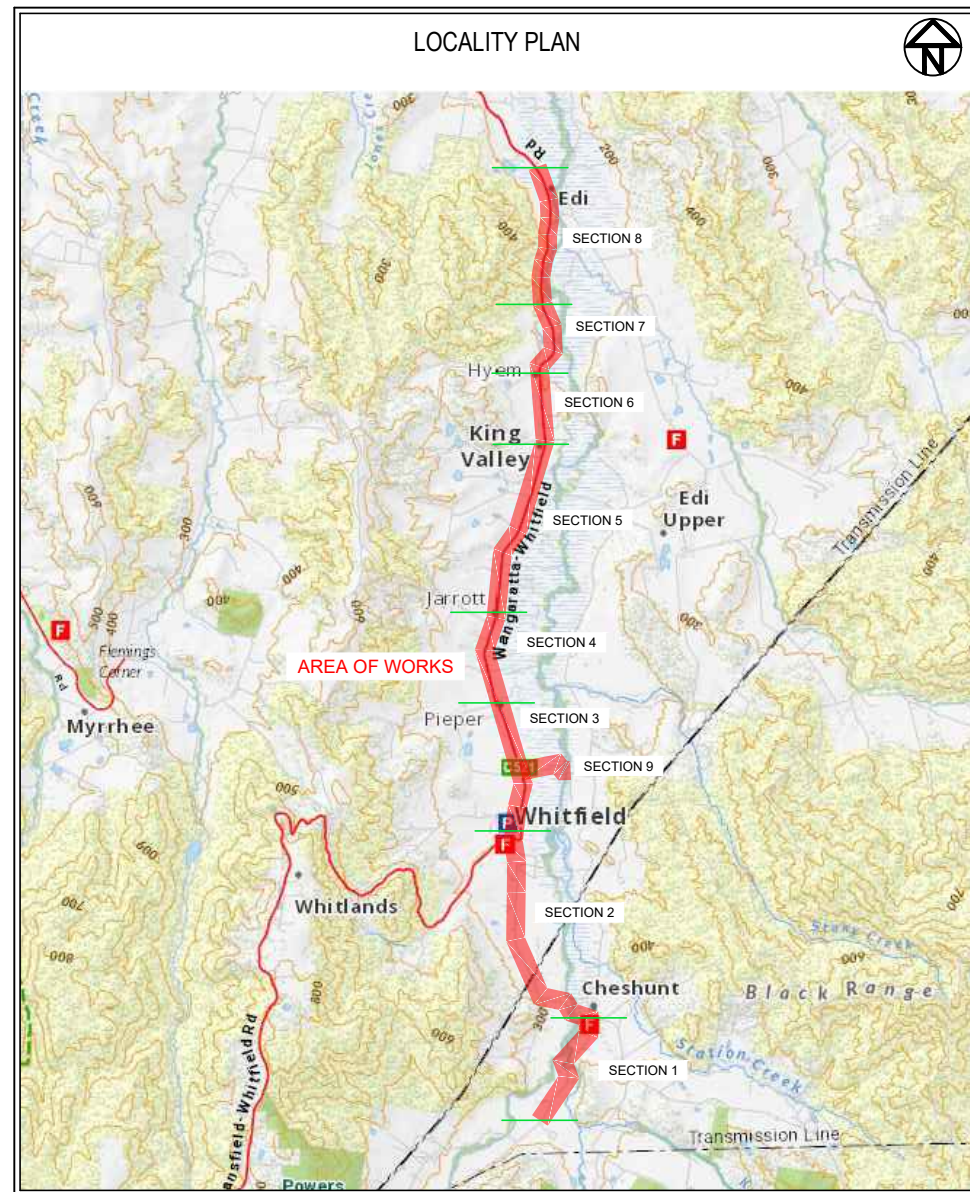


GMR Engineering Services

PRELIMINARY
(NOT FOR CONSTRUCTION)
09/06/2022

REDUCED SCALE

Rural City of Wangaratta Prosecco Bicycle Trail - Proposed Alignment King Valley



DRAWING SCHEDULE		
DRAWING NUMBER	DRAWING TITLE	REVISION
GMR21020.A1.01	Cover Sheet	
GMR21020.A1.02	Preliminary Alignment - Overall	F
GMR21020.S1.01	Preliminary Alignment - Section 1	D
GMR21020.S1.02 - S1.08	Preliminary Alignment Enlargement	F
GMR21020.S1.09 - S1.18	Preliminary Cross Sections	C
GMR21020.S2.01	Preliminary Alignment - Section 2	D
GMR21020.S2.02 - S2.15	Preliminary Alignment Enlargement	F
GMR21020.S2.16 - S32	Preliminary Cross Sections	C
GMR21020.S3.01	Preliminary Alignment - Section 3	D
GMR21020.S3.02 - S3.09	Preliminary Alignment Enlargement	F
GMR21020.S3.10 - S3.20	Preliminary Cross Sections	C
GMR21020.S4.01	Preliminary Alignment - Section 4	D
GMR21020.S4.02 - S4.05	Preliminary Alignment Enlargement	F
GMR21020.S4.06 - S4.10	Preliminary Cross Sections	C
GMR21020.S5.01	Preliminary Alignment - Section 4	D
GMR21020.S5.02 - S5.09	Preliminary Alignment Enlargement	F
GMR21020.S5.10 - S5.18	Preliminary Cross Sections	C
GMR21020.S6.01	Preliminary Alignment - Section 6	D
GMR21020.S6.02 - S6.08	Preliminary Alignment Enlargement	F
GMR21020.S6.09 - S6.16	Preliminary Cross Sections	C
GMR21020.S7.01	Preliminary Alignment - Section 7	D
GMR21020.S7.02 - S7.05	Preliminary Alignment Enlargement	F
GMR21020.S7.06 - S2.11	Preliminary Cross Sections	C
GMR21020.S8.01	Preliminary Alignment - Section 8	E
GMR21020.S8.02 - S8.07	Preliminary Alignment Enlargement	G
GMR21020.S8.08 - S8.17	Preliminary Cross Sections	C

DRAWING SCHEDULE		
DRAWING NUMBER	DRAWING TITLE	REVISION
GMR21020.A1.01	Cover Sheet	
GMR21020.S9.01	Preliminary Alignment - Section 9	D
GMR21020.S9.02 - S9.04	Preliminary Alignment Enlargement	F
GMR21020.S9.05 - S9.13	Preliminary Cross Sections	C
GMR21020.BR.01 - BR.02	Existing Bridge 1 - Stoney Creek	A
GMR21020.BR.03 - BR.04	Existing Bridge 2 - Stoney Creek	A
GMR21020.BR.05 - BR.06	Existing Bridge 4 - King River	A
GMR21020.BR.07 - BR.08	Existing Bridge 5 - King River	A
GMR21020.TR.01	Truss Bridge Details	B
GMR21020.TR.02 - TR.05	Truss Bridge Enlargement	B
GMR21020.EW.01 - EW.08	Proposed Elevated Boardwalk Details	B
GMR21020.EE.01 - EE.20	Boardwalk Enlargement	B
GMR21020.SG.01 - SG.07	Proposed Staging Area & Structures	B
GMR21020.RC.01 - RC.05	Proposed Road Crossings & Typical Structures	B
GMR21020.LA.01 - LA.04	Land Acquisition Enlargement	A
GMR21020.SB.01	Spoil Berm Arrangement	A
GMR21020.RW.01	Retaining Wall Detail	A
GMR21020.BH.01	Bore Hole Logs	A
GMR21020.R01 - R07	Proposed Alignment Review	D

© GMR Engineering Services
THIS DOCUMENT IS COPYRIGHT PROTECTED AND MAY ONLY BE USED FOR THE PURPOSE FOR WHICH IT WAS INTENDED. UNAUTHORIZED USE IS STRICTLY PROHIBITED. ALL DIMENSIONS AND LEVELS TO BE CHECKED ON THE PROJECT BEFORE COMMENCING ANY WORKS OR SHOP DRAWINGS. DRAWINGS NOT TO BE SCALED.



WARNING
BEWARE OF UNDERGROUND SERVICES
The locations of underground services are approximate only and their exact position should be proven on site. No guarantee is given that all existing services are shown.

STN	Easting	Northing	Elevation	Description
STN400	448097.216	5924070.333	281.298	NAIL IN DUMPY
STN401	448180.176	5925060.831	281.255	NAIL IN DUMPY
STN402	448265.019	5925193.130	280.215	NAIL IN DUMPY
STN403	448376.186	5925353.717	278.993	NAIL IN DUMPY
STN404	448442.891	5925525.940	278.094	NAIL IN DUMPY
STN405	448596.538	5925794.830	276.484	NAIL IN DUMPY
STN406	448762.399	5926060.521	275.221	NAIL IN DUMPY
STN407	448933.501	5926324.094	273.479	NAIL IN DUMPY
STN408	449108.412	5926587.234	273.103	NAIL IN DUMPY
STN409	449288.672	5926850.826	270.969	NAIL IN DUMPY
STN410	449475.679	5927124.399	269.813	NAIL IN DUMPY
STN411	449669.910	5927400.369	269.112	NAIL IN DUMPY
STN412	449871.435	5927678.590	266.896	NAIL IN DUMPY
STN413	449138.533	5927964.159	266.488	NAIL IN DUMPY
STN414	449399.332	5927258.041	265.419	NAIL IN DUMPY
STN415	448894.584	5927305.174	264.484	NAIL IN DUMPY
STN416	448894.599	5927305.176	264.467	NAIL IN DUMPY
STN417	448787.436	5927331.333	266.461	NAIL IN DUMPY
STN418	448757.461	5927360.657	265.104	NAIL IN DUMPY
STN419	448728.499	5927394.539	263.571	NAIL IN DUMPY
STN420	448610.999	5927565.447	264.978	NAIL IN DUMPY
STN421	448464.590	5927574.314	263.885	NAIL IN DUMPY
STN422	448289.370	5927608.509	265.257	NAIL IN DUMPY
STN423	448208.903	5927658.852	265.057	NAIL IN DUMPY
STN424	448147.891	5927765.785	264.032	NAIL IN DUMPY
STN425	448026.976	5928031.783	266.889	NAIL IN DUMPY
STN426	447883.373	5928330.736	268.141	NAIL IN DUMPY
STN427	447730.558	5928659.416	270.091	NAIL IN DUMPY
STN428	447649.957	5928974.227	265.446	NAIL IN DUMPY
STN429	447655.190	5929291.130	262.028	NAIL IN DUMPY
STN430	447629.894	5929308.895	253.975	NAIL IN DUMPY
STN431	447633.330	5929585.711	252.947	NAIL IN DUMPY
STN432	447692.142	5929972.913	250.465	NAIL IN DUMPY
STN433	447660.018	5930465.250	247.776	NAIL IN DUMPY
STN434	447700.630	5930678.577	246.305	NAIL IN DUMPY
STN435	447720.418	5930893.636	246.554	NAIL IN DUMPY
STN436	447740.456	5931539.907	243.374	NAIL IN DUMPY
STN437	447838.927	5932085.734	238.883	STAR PICKET
STN438	448092.815	5932381.658	236.775	NAIL IN DUMPY
STN439	448578.741	5932427.903	237.415	STAR PICKET
STN440	448369.305	5932456.479	236.288	NAIL IN DUMPY
STN441	448438.782	5932485.298	236.882	NAIL IN DUMPY
STN442	447693.224	5932525.688	235.673	NAIL IN DUMPY
STN443	447683.493	5932588.720	235.367	NAIL IN DUMPY
STN444	447635.894	5932700.620	235.368	NAIL IN DUMPY

STN	Easting	Northing	Elevation	Description
STN299	447589.001	5932877.431	234.601	NAIL IN DUMPY
STN298	447510.650	5933117.744	233.368	NAIL IN DUMPY
STN297	447398.192	5933467.348	232.400	NAIL IN DUMPY
STN296	447237.459	5933804.467	230.522	NAIL IN DUMPY
STN295	447177.460	5934087.442	229.429	NAIL IN DUMPY
STN294	447082.303	5934417.591	228.971	NAIL IN DUMPY
STN293	446986.097	5934866.346	228.339	NAIL IN DUMPY
STN292	447082.134	5935176.665	225.149	NAIL IN DUMPY
STN291	447164.288	5935413.486	223.907	NAIL IN DUMPY
STN290	447249.415	5935699.197	224.477	METAL ROD
STN289	447269.965	5935966.653	221.318	NAIL IN DUMPY
STN288	447313.836	5936268.965	218.820	NAIL IN DUMPY
STN287	447342.050	5936592.766	217.881	NAIL IN DUMPY
STN286	447664.521	5937405.823	214.771	NAIL IN DUMPY
STN285	447858.786	5937939.597	214.113	NAIL IN DUMPY
STN284	447966.006	5938315.705	212.349	NAIL IN DUMPY
STN283	448067.961	5938651.570	210.973	NAIL IN DUMPY
STN282	448184.754	5939075.672	207.543	NAIL IN DUMPY
STN281	448221.933	5939313.856	206.948	NAIL IN DUMPY
STN280	448163.119	5939812.846	204.727	NAIL IN DUMPY
STN279	448125.247	5940325.598	202.515	NAIL IN DUMPY
STN278	448084.483	5940626.174	203.808	NAIL IN DUMPY
STN277	448089.367	5940821.233	200.864	NAIL IN DUMPY
STN276	448136.269	5940912.384	200.140	NAIL IN DUMPY
STN275	448163.053	5940942.350	199.785	NAIL IN DUMPY
STN274	448355.668	5941092.599	197.461	NAIL IN DUMPY
STN273	448398.998	5941248.743	197.493	NAIL IN DUMPY
STN272	448366.078	5941663.840	196.237	NAIL IN DUMPY
STN271	448146.338	5942084.713	195.366	NAIL IN DUMPY
STN270	448141.244	5942317.902	197.712	NAIL IN DUMPY
STN1241D	448197.256	5942410.717	191.874	NAIL IN DUMPY
STN1242D	448189.971	5942526.043	191.584	NAIL IN DUMPY
STN1243D	448153.985	5942614.879	190.782	STEEL ROD
STN1244D	448154.483	5942765.974	190.982	STEEL BOLT
STN1245D	448181.764	5942854.207	189.929	STEEL ROD
STN1246D	448188.109	5942919.213	190.952	STEEL ROD
STN1247D	448230.777	5942990.749	190.783	STEEL ROD
STN1248D	448257.537	5943130.038	189.835	STEEL ROD
STN1249D	448294.896	5943337.374	189.827	NAIL IN DUMPY
STN241	448259.160	5943451.008	190.436	NAIL IN DUMPY
STN243	448233.378	5943571.736	189.064	NAIL IN DUMPY
STN244	448291.858	5943805.264	188.252	NAIL IN DUMPY
STN500	448306.246	5944104.372	187.537	NAIL IN DUMPY
STN501	448328.438	5944045.755	188.482	NAIL IN DUMPY

PM	Easting	Northing	Elevation	Description
PMWA3	449421.787	5924451.916	294.686	BRASS PLAQUE IN CONCRETE
PMED17	449238.926	5926863.722	269.011	BRASS PLAQUE IN CONCRETE
PMED14	449213.319	5926884.382	269.073	BRASS PLAQUE IN CONCRETE
PMED19	449275.682	5927253.904	266.858	BRASS PLAQUE IN CONCRETE
PMWH6	447707.512	5930014.089	251.595	BRASS PLAQUE IN CONCRETE
PMWH62	447850.638	5930467.821	247.230	BRASS PLAQUE IN CONCRETE
PMWH66	447767.219	5930926.344	245.448	BRASS PLAQUE IN CONCRETE
PMWH60	447767.148	5930939.249	245.681	BRASS PLAQUE IN CONCRETE
PMWH65	447756.176	5931554.398	242.658	BRASS PLAQUE IN CONCRETE
PMWH49	447850.064	5932098.435	238.945	BRASS PLAQUE IN CONCRETE
PMWH63	447787.093	5932313.232	237.303	BRASS PLAQUE IN CONCRETE
PMMY41	447150.972	5935432.320	223.600	BRASS PLAQUE IN CONCRETE
PMMY42	448229.442	5939330.074	205.821	BRASS PLAQUE IN CONCRETE
PMMY15	448053.284	5940677.042	204.982	BRASS PLAQUE IN CONCRETE
PMCA6	448751.334	5944019.717	187.660	BRASS PLAQUE IN CONCRETE
PMMO72	448432.962	5944042.927	188.092	BRASS PLAQUE IN CONCRETE

GENERAL NOTES:

- THESE PLANS HAVE BEEN PREPARED FOR RURAL CITY OF WANGARATTA FROM A FIELD SURVEY FOR THE PURPOSE OF DESIGNING NEW CONSTRUCTIONS AND SHOULD NOT BE USED FOR ANY OTHER PURPOSE.
- BUILDINGS AND FENCES SHOWN ALONG BOUNDARY LINES ARE FOR IDENTIFICATION PURPOSES ONLY AND THE SAME IN RELATION TO THE TITLE BOUNDARIES HAS NOT BEEN DETERMINED BY THIS SURVEY.
- THE LOCATION OF SURFACE PITS, VALVE COVERS, ETC SHOWN HEREON HAVE BEEN NOTED FROM EXISTING RECORDS AND AS VARIATIONS WITH RECORDS MAY EXIST COMPLETE ACCURACY CANNOT BE GUARANTEED.
- PRIOR TO ANY DEMOLITION, EXCAVATION OR CONSTRUCTION ON THE SITE THE RELEVANT AUTHORITY SHOULD BE CONTACTED TO ASCERTAIN THE POSSIBLE LOCATIONS OF FURTHER SERVICES AND DETAILED LOCATIONS OF ALL SERVICES.
- LEVELS SHOWN ARE IN METERS AND TO A.H.D.

WARNING

BEWARE OF UNDERGROUND SERVICES

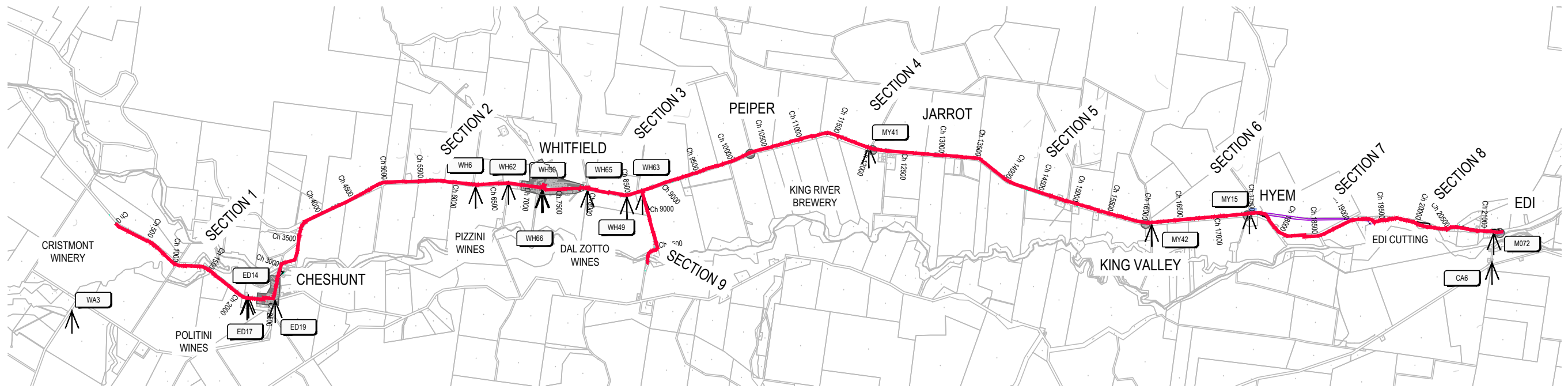
The locations of underground services are approximate only and their exact position should be proven on site. No guarantee is given that all existing services are shown.

NOTE !

BEWARE OF EXISTING OVERHEAD POWER CABLES.

NOTES:

- REFER TO ENLARGEMENTS FOR PRIVATE DRIVEWAY CROSSING, CULVERT AND CANTILEVER BRIDGE LOCATIONS.
- ALL SERVICE LOCATIONS TO BE CONFIRMED PRIOR TO COMMENCEMENT OF WORKS.
- ALL TELSTRA SERVICES AS SHOWN TO QUALITY LEVEL D (QL-D). ASSET DEPICTED ON PLANS ARE IN SCHEMATIC FORMAT ONLY.
- VERTICAL TRAIL GEOMETRY BASED UPON 20m LONG VERTICAL CURVES WHERE GRADE CHANGES EXCEEDS 10%. ALSO 10m LONG VERTICAL CURVES WHERE GRADE CHANGE EXCEEDS 5% BUT IS LESS THAN 10%.
- HORIZONTAL GEOMETRY BASED UPON CURVE RADII OF 10m OR BETTER ALONG LENGTH OF TRAIL PROPER. CURVE RADII AT ROAD CROSSINGS REDUCE TO 2.5m AND 5m TO FORCE RIDERS TO SLOW DOWN AND DISMOUNT.
- RAMPS ARE PROPOSED TO BE POSITIONED LEADING UP TO TRUSS STRUCTURE BRIDGES TO ELIMINATE NEED FOR EARTH FILL EMBANKMENTS WHERE AMPLE ROOM IS GIVEN FOR SUCH STRUCTURE.
- BOARDWALKS TO HAVE 1:20 EARTHEN EMBANKMENT APPROACHES AND TO RETAIN A FLAT DECK OVER WATERWAYS. MINIMUM 600mm SOFFIT CLEARANCE AT ALL LOCATIONS.
- ALL FINISHED TRAIL SURFACES TO BE SLOPED AWAY FROM PAVEMENT AND FREELY DRAINING.
- ALL CULVERTS TO BE INSTALLED WITH 1:200 SLOPE MIN. AND BE FREELY DRAINING.
- ALL CULVERT TO BE INSTALLED WITH STONE BEACHING OVER GEOTEXTILE NOMINAL 0.5m² TO EACH END.
- ALL CULVERT LOCATIONS TO BE MARKED WITH GUIDE POSTS.
- ALL SPOIL BERMS, AS NOTED, INDICATIVE ONLY. FINAL LOCATIONS TO BE DETERMINED BY CONSTRUCTOR AND REFERENCE TO VEGETATION IMPACT STUDY.



PROPOSED ALIGNMENT - OVERALL
SCALE 1:30,000 @ A1
SCALE 1:60,000 @ A3

PRELIMINARY
(NOT FOR CONSTRUCTION)
09/06/2022

REDUCED SCALE

GMR Engineering Services

Phone: (03) 5822 0333
Fax: (03) 5822 0033
Website: gmreng.com.au

LEGEND:

STORMWATER PIPE	MINOR CONTOUR INTERVAL IS 0.20m	UNDERGROUND WATER MAIN	ALIGNMENT > 6m FROM ROAD	TREE REMOVAL
JUNCTION PIT	MAJOR CONTOUR INTERVAL IS 1.0m	TELSTRA PIT	ALIGNMENT < 6m FROM ROAD	LAND ACQUISITION
SIDE ENTRY PIT	TREES	TELSTRA CABLE	GUARD RAIL	
GRATED TOP ENTRY PIT	DEAD TREE	SIGN POST	ELEVATED BOARDWALK	
KERB AND CHANNEL	PERMANENT SURVEY MARK	GAS MAIN	ELEVATED RAMP	
CENTRELINE OF BITUMEN	GATE	BRIDGE STRUCTURE	PRIVATE DRIVEWAY	
EDGE OF SEAL	OVERHEAD ELECTRICITY	COMMERCIAL DRIVEWAY	WHITFIELD ALIGNMENT (BY OTHERS)	
INVERT OF TABLEDRAIN	UNDERGROUND ELECTRICITY			
	ELECTRICITY POLE			

DESIGNED BY G.Ryan December 2021
DRAFTED BY T.Ainsworth December 2021
VERIFIED BY

0 300 600 1,200
SCALE 1:30,000 @ A1
SCALE 1:60,000 @ A3

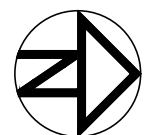
REV	AMENDMENTS	DATE	BY
F	AMENDED AS PER ALIGNMENT REVIEW	04/05/22	TA
E	AMENDED AS PER GMR ALIGNMENT REVIEW	13/04/22	TA
D	AMENDED AS PER GMR MARKUPS	04/03/22	TA
C	AMENDED AS PER GMR MARKUPS	18/02/22	TA
B	AMENDED AS PER GMR MARKUPS	03/02/22	TA
A	INITIAL DRAFT	09/12/21	TA
REV	AMENDMENTS	DATE	BY

GMR Engineering Services

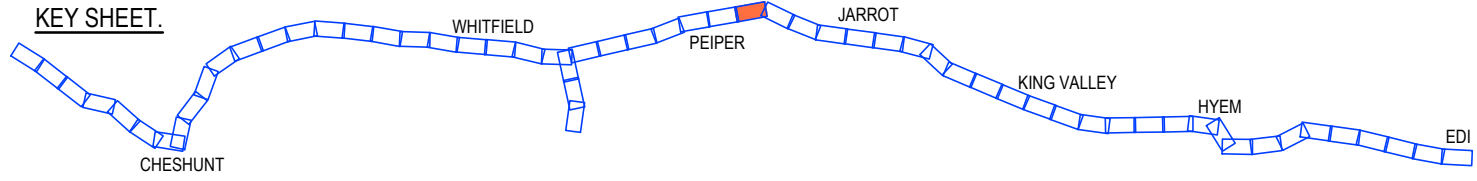
Rural City of Wangaratta Prosecco Trail

Chrismont Winery to Edi

Concept Alignment - Overall
Drawing No. GMR21020.A02
Revision. F Sheet No. A02
GMR21020.03 - Proposed Alignment Overall.dwg

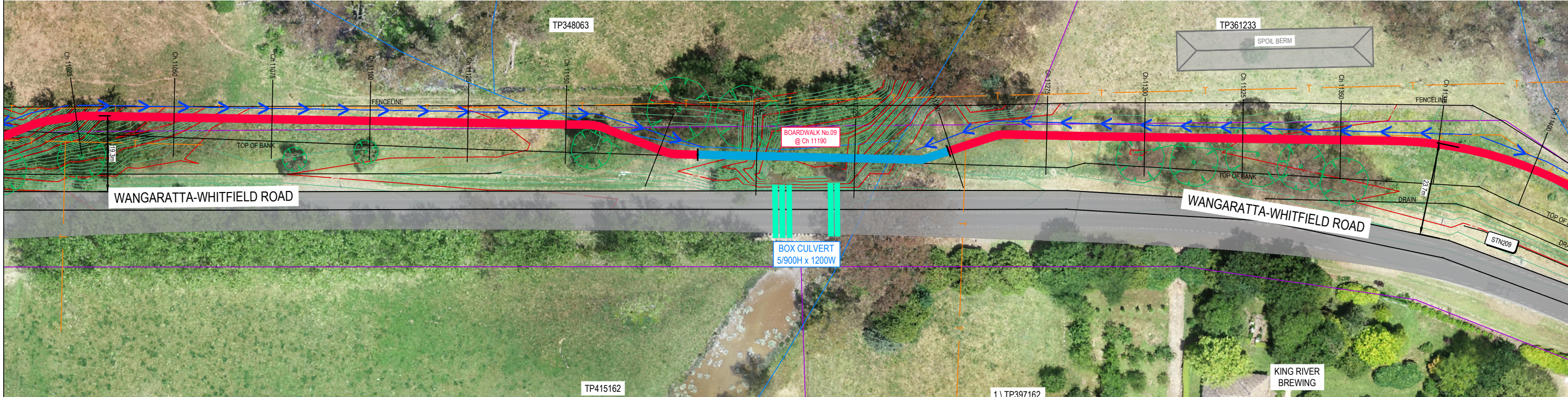


PM/STN	Easting	Northing	Elevation	Description
STN209	446985.097	5934866.346	226.339	NAIL IN DUMPY

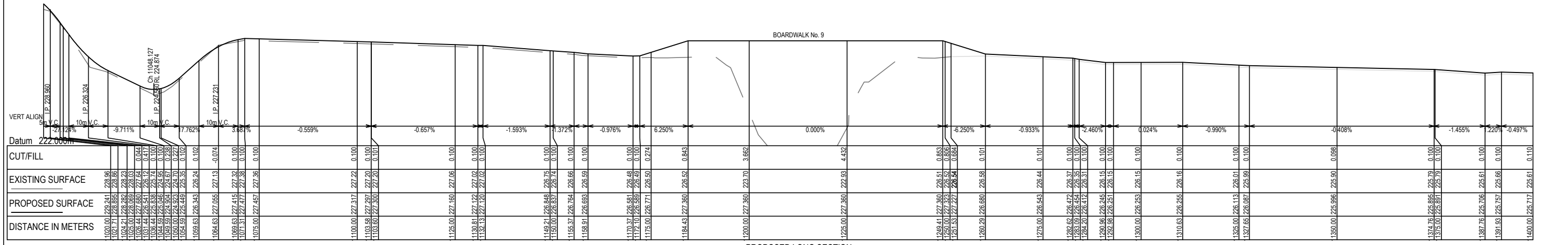


PRELIMINARY
(NOT FOR CONSTRUCTION)
09/06/2022

REDUCED SCALE



PROPOSED ALIGNMENT - ENLARGEMENT
SCALE 1:500 @ A1
SCALE 1:1,000 @ A3



PROPOSED LONG SECTION
SCALE 1:2,500V, 1:500H @ A1
SCALE 1:5,000V, 1:1,000H @ A3

GMR
Engineering Services

Phone: (03) 5822 0333
Fax: (03) 5822 0033
Website: gmrengr.com.au

LEGEND.

STORMWATER PIPE	MINOR CONTOUR INTERVAL IS 0.20m	UNDERGROUND WATER MAIN	ALIGNMENT > 6m FROM ROAD	TREE REMOVAL
JUNCTION PIT	MAJOR CONTOUR INTERVAL IS 1.0m	TELSTRA PIT	ALIGNMENT < 6m FROM ROAD	LAND ACQUISITION
SIDE ENTRY PIT	TREES	TELSTRA CABLE	GUARD RAIL	
GRATED TOP ENTRY PIT	DEAD TREE	SIGN POST	ELEVATED BOARDWALK	
KERB AND CHANNEL	PERMANENT SURVEY MARK	GAS MAIN	ELEVATED RAMP	
CENTRELINE OF BITUMEN	GATE	FENCELINE	BRIDGE STRUCTURE	
EDGE OF SEAL	OVERHEAD ELECTRICITY	LINEMARKING	PRIVATE DRIVEWAY	
INVERT OF TABLEDRAIN	UNDERGROUND ELECTRICITY		COMMERCIAL DRIVEWAY	
	ELECTRICITY POLE		WHITFIELD ALIGNMENT (BY OTHERS)	



DESIGNED BY: G.Ryan
DRAFTED BY: T.Ainsworth
VERIFIED BY:

December 2021
December 2021

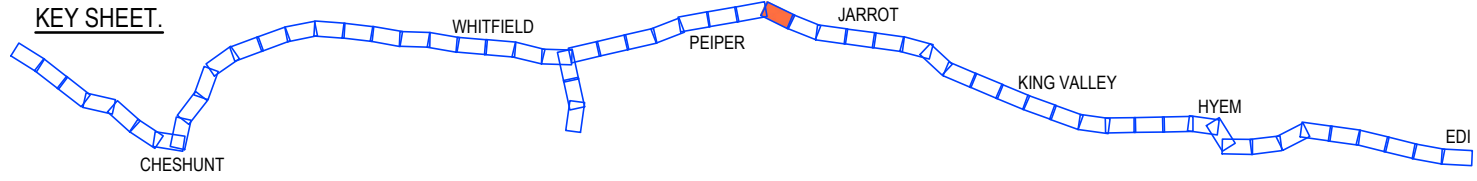
REV	AMENDMENTS	DATE	BY
F	AMENDED FROM DESIGN REVIEW	04/05/22	TA
E	AMENDED AS PER GMR ALIGNMENT REVIEW	13/04/22	TA
D	AMENDED AS PER GMR MARKUPS	04/03/22	TA
C	AMENDED AS PER GMR MARKUPS	18/02/22	TA
B	AMENDED AS PER GMR MARKUPS	03/02/22	TA
A	INITIAL DRAFT	09/12/21	TA

0 5 10 20
SCALE 1:500 @ A1
SCALE 1:1,000 @ A3

GMR Engineering Services
Rural City of Wangaratta
Prosecco Trail
Christmont to Edi - Section 4

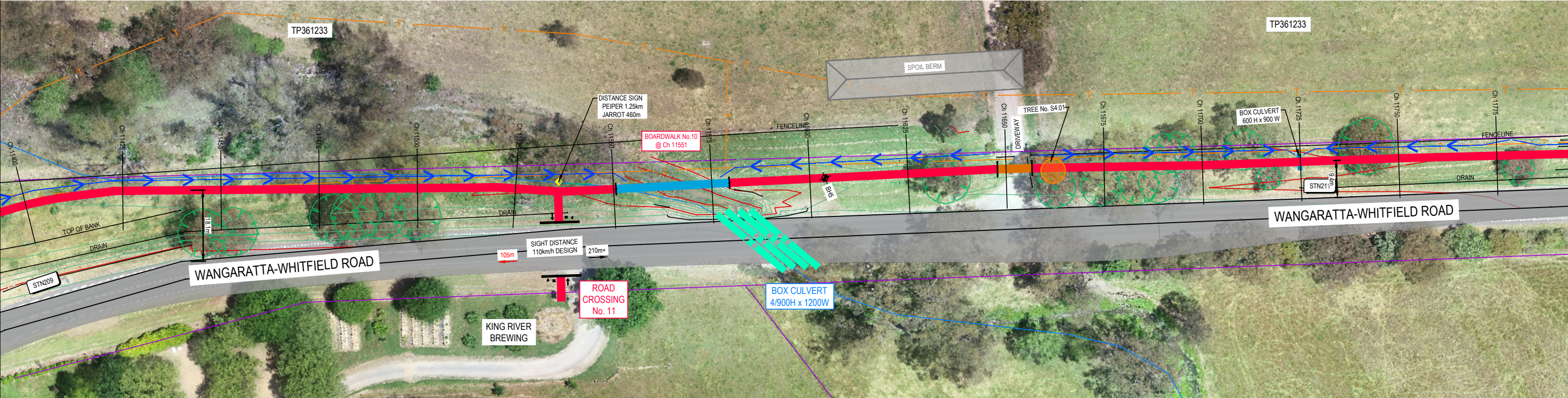
Proposed Alignment - Enlargement
Drawing No. GMR21020.S4.03
Revision. F Sheet No. 36
GMR21020.03 - Proposed Alignment Sht 35 - 45.dwg

PM/STN	Easting	Northing	Elevation	Description
STN209	446985.097	5934866.346	226.339	NAIL IN DUMPY
STN211	447082.134	5935176.665	225.149	NAIL IN DUMPY

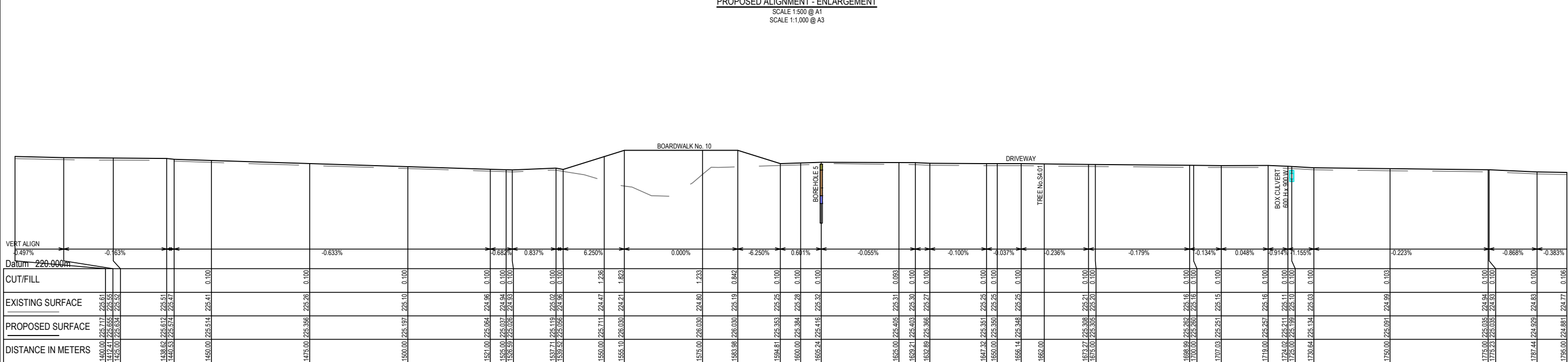


PRELIMINARY
(NOT FOR CONSTRUCTION)
09/06/2022

REDUCED SCALE



PROPOSED ALIGNMENT - ENLARGEMENT
SCALE 1:500 @ A1
SCALE 1:1,000 @ A3



PROPOSED LONG SECTION
SCALE 1:2,500V, 1:500H @ A1
SCALE 1:5,000V, 1:1,000H @ A3

© GMR Engineering Services
 THIS DOCUMENT IS COPYRIGHT PROTECTED AND MAY ONLY
 BE USED FOR THE PROJECT AND SITE SPECIFICALLY IDENTIFIED.
 UNAUTHORIZED REUSE IS STRICTLY PROHIBITED. ALL
 RIGHTS RESERVED. ANY REUSE OF THIS DOCUMENT WITHOUT
 THE WRITTEN PERMISSION OF GMR ENGINEERING SERVICES
 BEFORE COMMENCING ANY WORKS OR SHOP DRAWINGS
 DRAWINGS NOT TO BE SCALED.

Phone: (03) 5822 0333
Fax: (03) 5822 0033
Website: gmreng.com.au

LEGEND.

STORMWATER PIPE	MINOR CONTOUR INTERVAL IS 0.20m	UNDERGROUND WATER MAIN	ALIGNMENT > 6m FROM ROAD	TREE REMOVAL
JUNCTION PIT	MAJOR CONTOUR INTERVAL IS 1.0m	TELSTRA PIT	ALIGNMENT < 6m FROM ROAD	LAND ACQUISITION
SIDE ENTRY PIT	TREES	TELSTRA CABLE	GUARD RAIL	
GRATED TOP ENTRY PIT	DEAD TREE	SIGN POST	ELEVATED BOARDWALK	
KERB AND CHANNEL	PERMANENT SURVEY MARK	GAS MAIN	ELEVATED RAMP	
CENTRELINE OF BITUMEN	GATE	FENCELINE	BRIDGE STRUCTURE	
EDGE OF SEAL	OVERHEAD ELECTRICITY	LINEMARKING	PRIVATE DRIVEWAY	
INVERT OF TABLEDRAIN	UNDERGROUND ELECTRICITY		COMMERCIAL DRIVEWAY	
	ELECTRICITY POLE		WHITFIELD ALIGNMENT (BY OTHERS)	



DESIGNED BY G.Ryan December 2021
 DRAFTED BY T.Ainsworth December 2021
 VERIFIED BY

REV	AMENDMENTS	DATE	BY
F	AMENDED FROM DESIGN REVIEW	04/05/22	TA
E	AMENDED AS PER GMR ALIGNMENT REVIEW	13/04/22	TA
D	AMENDED AS PER GMR MARKUPS	04/03/22	TA
C	AMENDED AS PER GMR MARKUPS	18/02/22	TA
B	AMENDED AS PER GMR MARKUPS	03/02/22	TA
A	INITIAL DRAFT	09/12/21	TA

0 5 10 20
 SCALE 1:500 @ A1
 SCALE 1:1,000 @ A3

GMR Engineering Services
Rural City of Wangaratta
Prosecco Trail
 Chrismont to Edi - Section 4

Proposed Alignment - Enlargement
 Drawing No. GMR21020.S4.04
 Revision. F Sheet No. S4.04
 GMR21020.03 - Proposed Alignment Sht 35 - 45.dwg

