



NOTES:

- CROSS REFERENCES:
INDUSTRIAL CROSSINGS - SD250
RURAL CROSSINGS - SD255 / SD260
IDM - SECTION 12.9.1.
- THIS DRAWING DETAILS DIMENSIONS FOR STANDARD RESIDENTIAL CROSSINGS ONLY.
- CROSSING WIDTHS EXCEEDING THE MAXIMUM ALLOWABLE WILL REQUIRE APPLICATION FOR SPECIAL CONSIDERATION.
- JOINTS AND DOWEL BARS ARE REQUIRED ON EITHER SIDE OF THE CROSSING AT THE INTERFACE WITH THE FOOTPATH. PROVISION SHALL BE MADE IN EXISTING CONCRETE SECTIONS BY DRILLING HOLES TO A MINIMUM DEPTH OF 150mm AND INSERTING R10 DOWEL BARS.
- AN APPROVED JOINT FILLER SHALL BE PLACED ON EITHER SIDE OF THE CROSSING AGAINST FOOTPATH SLABS. DOWEL BARS ARE TO HAVE AN APPROVED BOND BREAKER APPLIED TO THE END OF THE BAR INSERTED INTO THE EXISTING CONCRETE FOOTPATH SECTIONS REFER SD220.
- ADDITIONAL WEAKENED PLANE JOINTS REQUIRED IF DISTANCE FROM BACK OF KERB TO FOOTPATH IS GREATER THAN 3000 AND SHALL BE PLACED AT THE MIDPOINT OF THE DISTANCE.
- THE MAXIMUM NUMBER OF CROSSINGS, WHERE ANY CROSSING EXCEEDS 3.5 METRES WIDTH, SHALL BE ONE (1) CROSSING WITH THE MAXIMUM WIDTH OF THAT CROSSING TO BE 6.0 METRES. CROSSINGS TO ADJACENT PROPERTIES SHALL BE EITHER FULLY COMBINED, AND OF MAXIMUM WIDTH OF 6.0 METRES, OR ELSE HAVE A MINIMUM SEPARATION AS APPROVED BY COUNCIL.
- FOOTPATHS OF 75mm THICKNESS ARE ACCEPTABLE ONLY WHERE THE LOTS ARE DEVELOPED ALREADY AND THE RISK OF SITE CONSTRUCTION DAMAGE IS NEGLIGIBLE. WHERE GREENFIELD SITES AND FUTURE HOUSING IS STILL TO BE DONE, THEN THE DEPTH OF THE FOOTPATH SHALL BE 125mm THROUGHOUT.

LEGEND:

EXPANSION JOINT  EJ
WEAKENED PLANE JOINTS  WPJ

ALL MEASUREMENTS IN MILLIMETRES

RETROFIT RESIDENTIAL VEHICLE CROSSING DETAIL

LAST UPDATED 06/02/2019

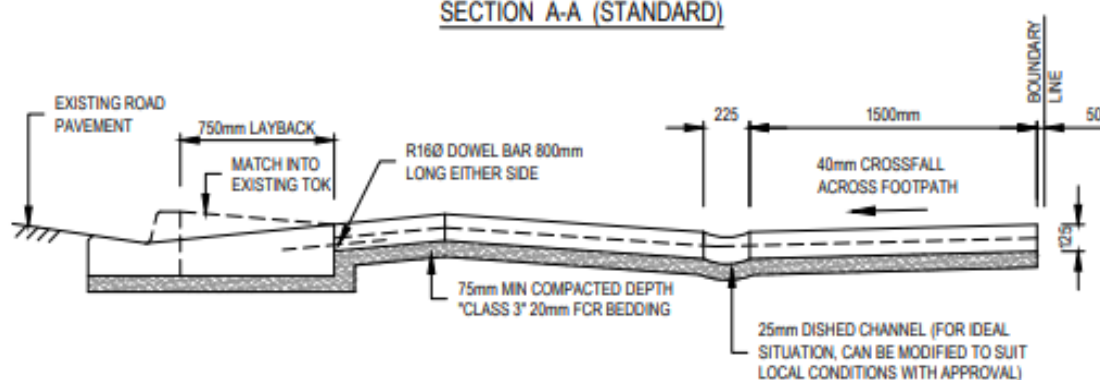
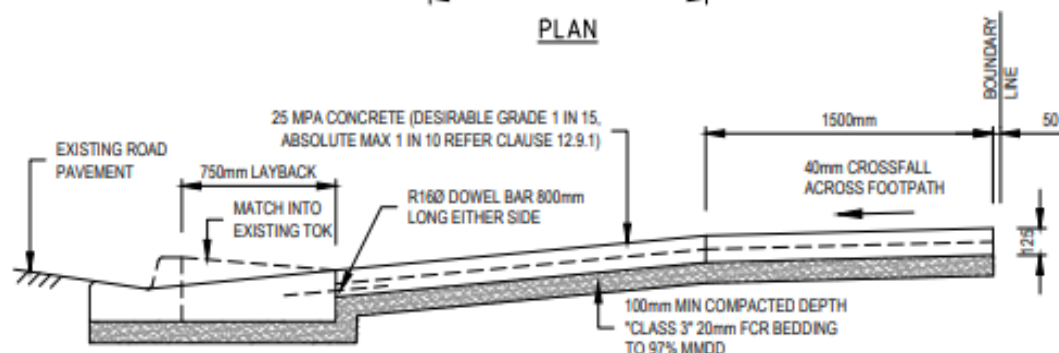
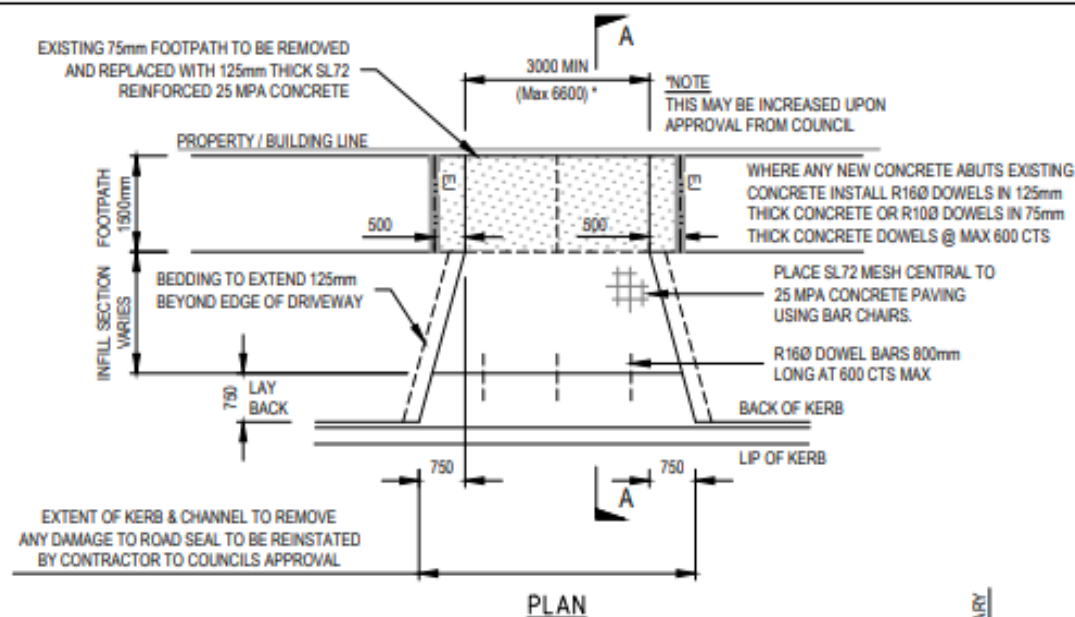
Infrastructure Design Manual Standard Drawings

A copy of the Infrastructure Design
Manual can be viewed on the
Design Manual website
www.designmanual.com.au

 Local Government
Infrastructure Design Association

SD 235

NOT TO SCALE



NOTE:

1. FOR GRADES STEEPER THAN 1 IN 15 REFER CLAUSE 12.9.1. LAYBACK & CROSSOVER, TO BE CONSTRUCTED IN PLAIN CONCRETE ONLY (NO COLOURED CONCRETE BEYOND PROPERTY BOUNDARY)
2. T.O.K. DENOTES TOP OF KERB
3. FOR STEEP TERRAIN CONTACT THE COUNCIL FOR GUIDANCE.

ALL MEASUREMENTS IN MILLIMETRES

LEGEND:

EXPANSION JOINT

WEAKENED PLANE JOINTS

EJ

NEW RESIDENTIAL SINGLE VEHICLE CROSSING DETAIL

LAST UPDATED 29/03/2016

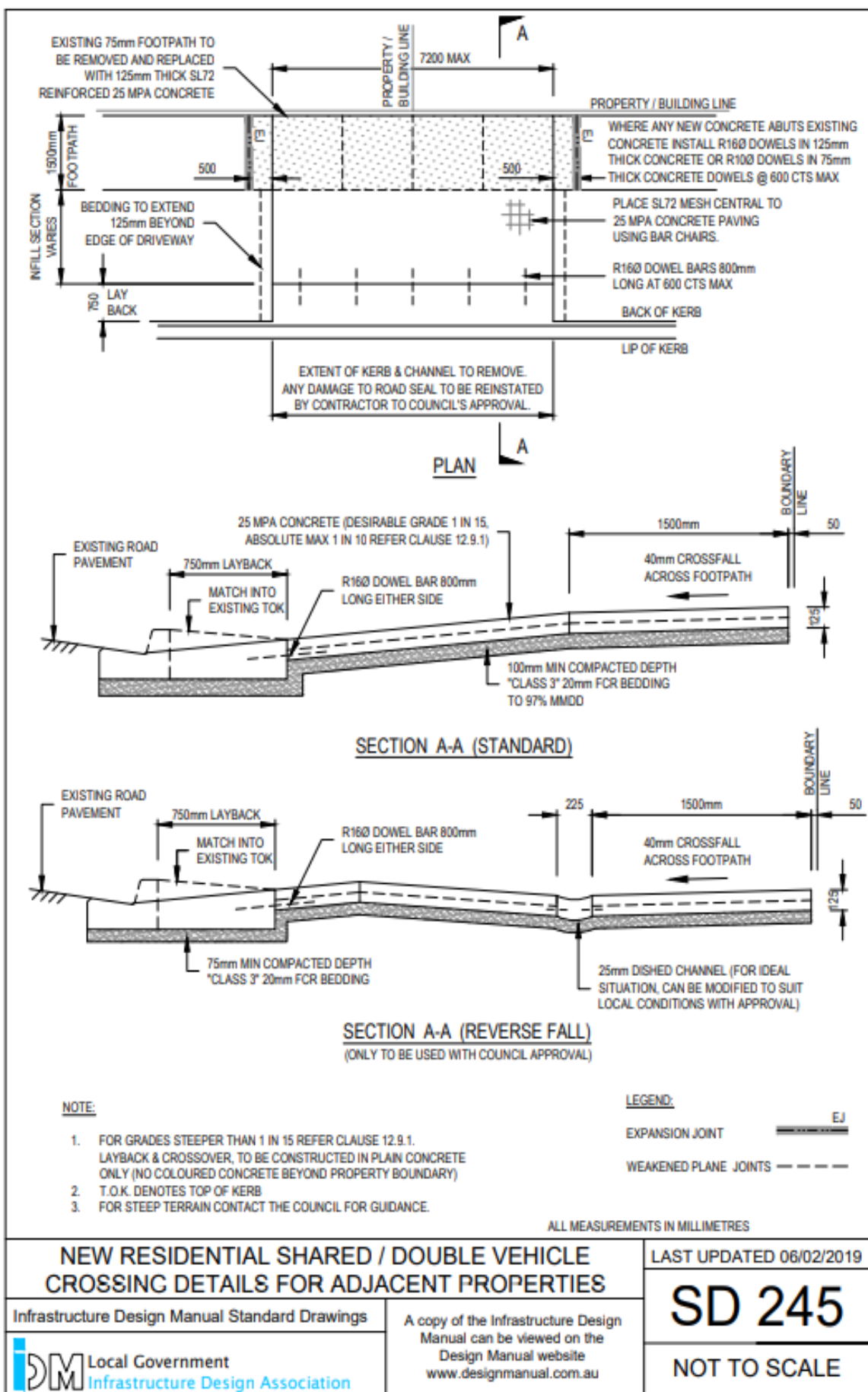
Infrastructure Design Manual Standard Drawings

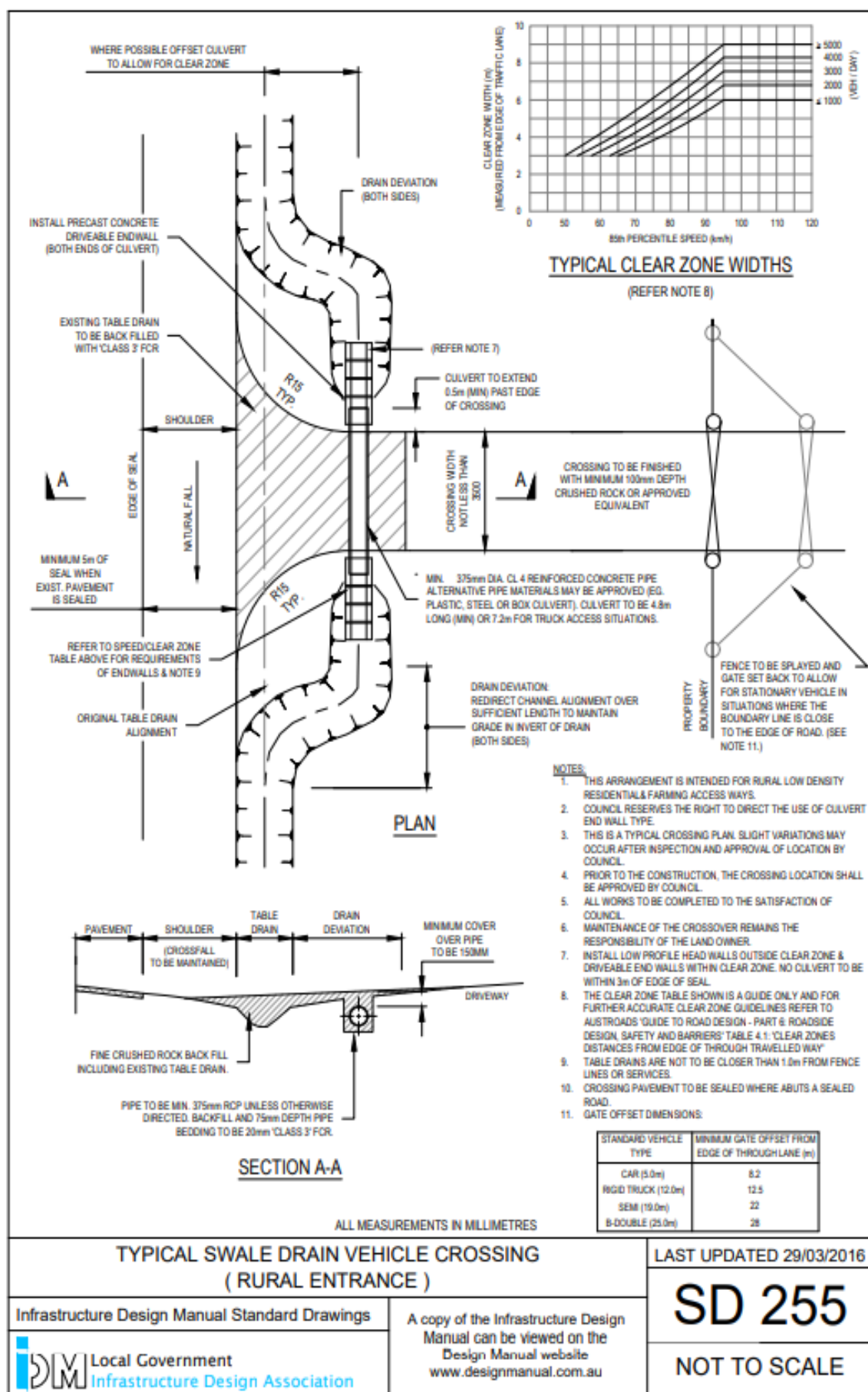
IDM Local Government Infrastructure Design Association

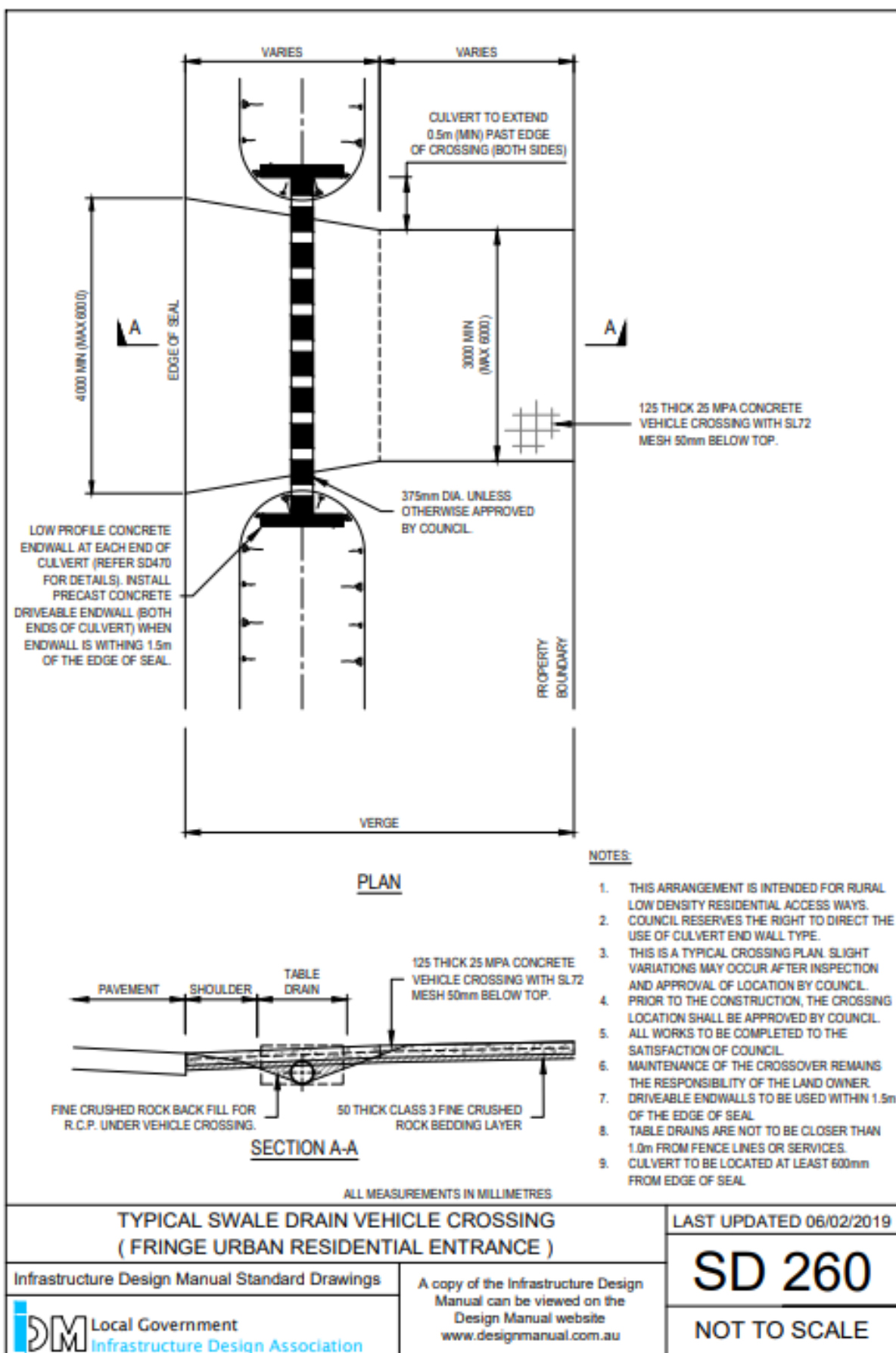
A copy of the Infrastructure Design Manual can be viewed on the Design Manual website www.designmanual.com.au

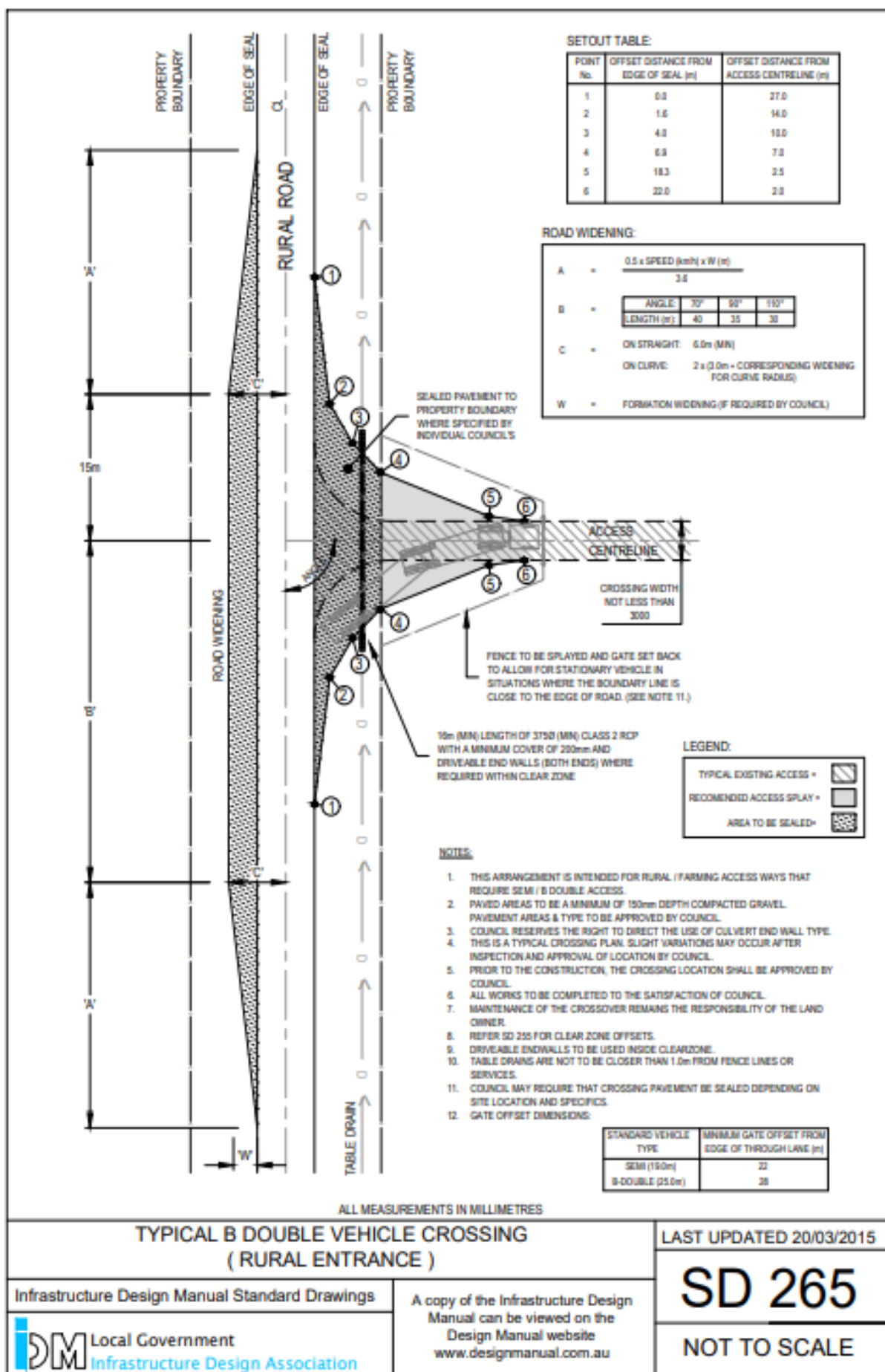
SD 240

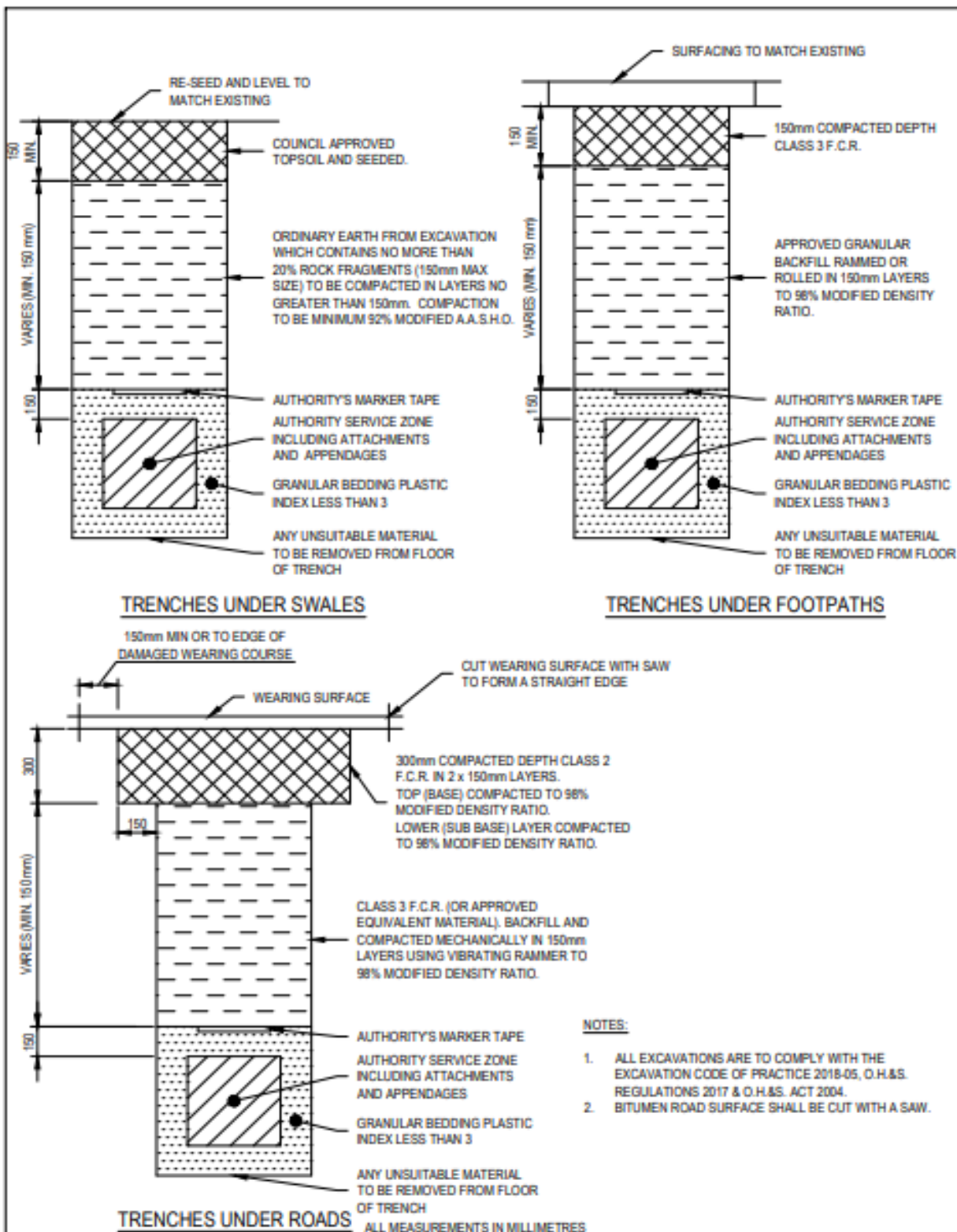
NOT TO SCALE











TRENCHING BACKFILL (TRENCHES WITHIN 1m OF COUNCIL ASSETS)

LAST UPDATED 20/02/2019

Infrastructure Design Manual Standard Drawings

A copy of the Infrastructure Design Manual can be viewed on the Design Manual website www.designmanual.com.au

SD 310

NOT TO SCALE